

Description

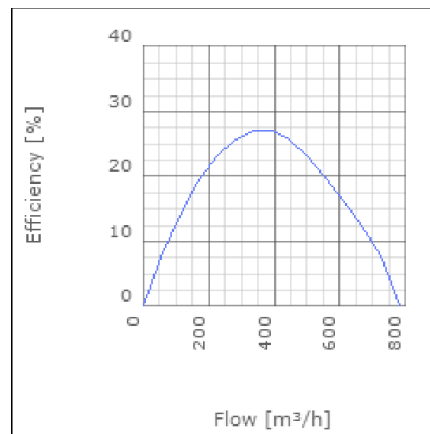
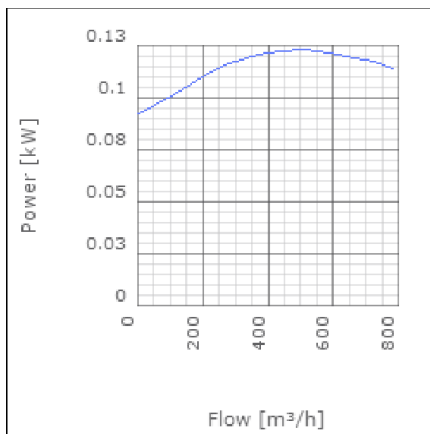
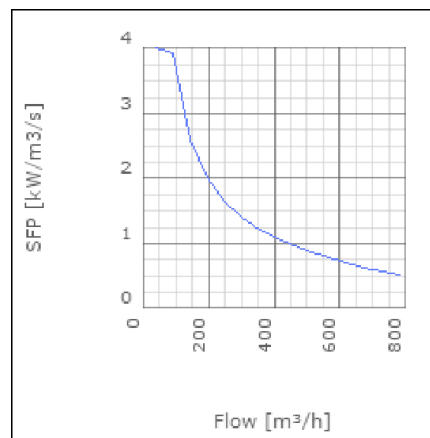
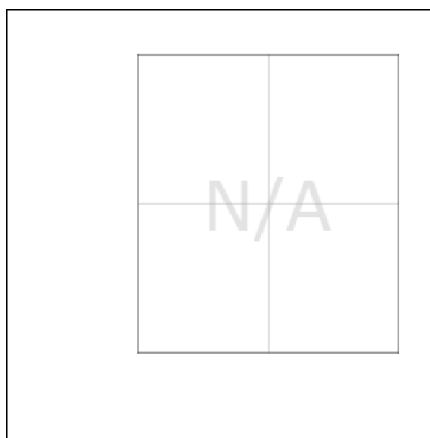
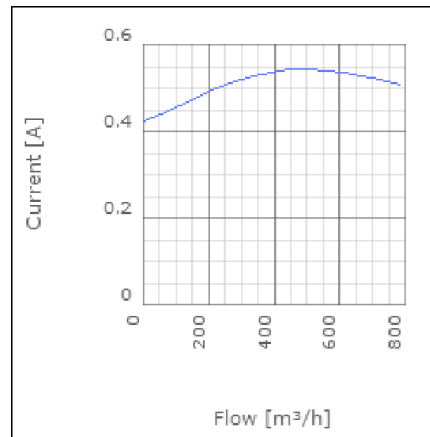
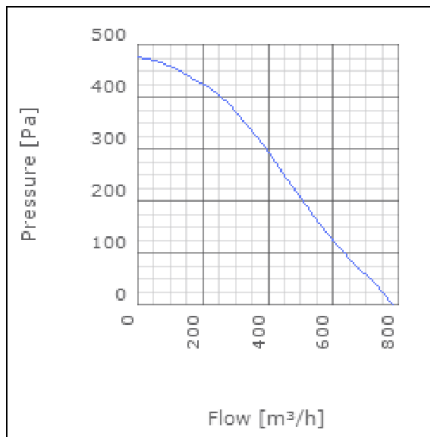
IRE is a range of insulated in-line centrifugal duct fans. They provide high pressure with low sound level. The IRE fans have good sound and fire insulation qualities provided by a 50mm pad of mineral wool. The high quality ball bearing mounted external rotor motors are maintenance free. They can be speed controlled from 0-100% by voltage variation. All motors are protected by approved thermo contacts. All 3-phase motors have ready fitted thermo contact leads for alarm functions etc. The fans have a strong galvanized steel housing incorporating a swing out design of the fan motor and impeller for easy cleaning and inspection.



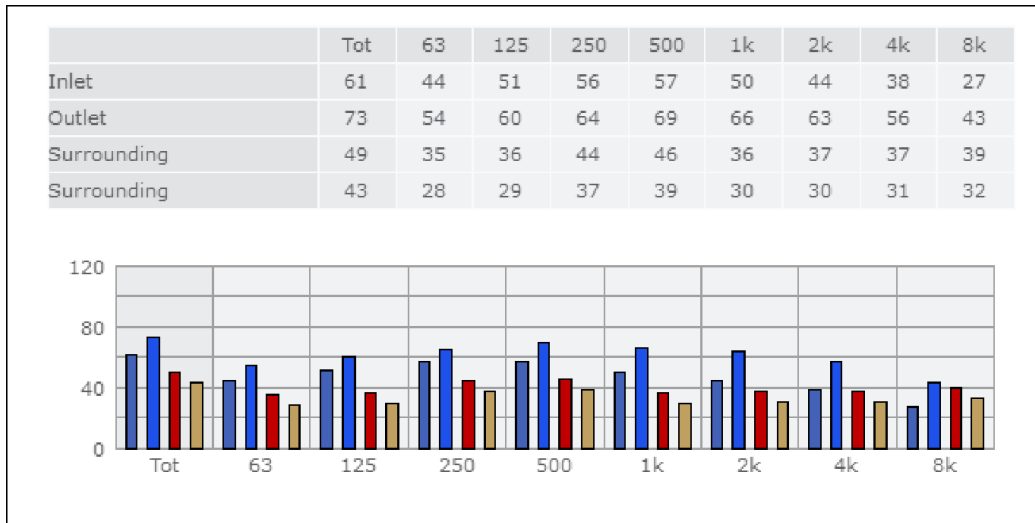
Technical data

Parameter	Value	Unit
Voltage	230	V
Phase	1	~
Frequency	50	Hz
Power	0.12	kW
Current	0.55	A
R.p.m.	2540	r/m
Max. temperature of transported air	70	°C
Max. temperature of transported air when speed-controlled	70	°C
Sound pressure level at 3 m	42	dB(A)
Length	532	mm
Width	489	mm
Height	308	mm
Weight	22	kg
Enclosure class, motor	44	IP
Insulation class, motor	F	
Capacitor	4	µF
Duct connection	ø200 mm	

Diagrams



Sound



Parameter

Distance: 3.000
 Propagation type: Hemi-spherical
 Equivalent absorption area: 20.00

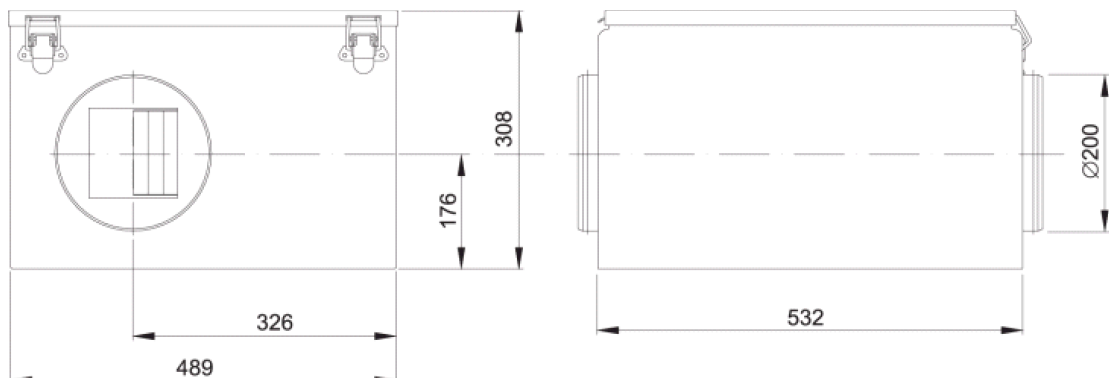
Checked point

Flow 435.252m³/h
 Static pressure 262Pa

Working point

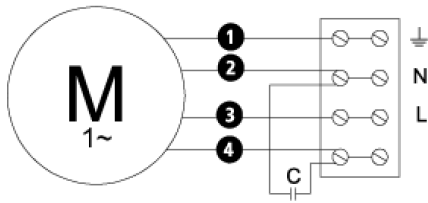
Flow 436.794m³/h
 Static Pressure 264Pa
 Power 0.12kW
 Speed 0r/m
 Current 0.54A
 Voltage 230V
 Efficiency 26.039%
 SFP 0kW/m³/s

Dimensions



Wiring diagram

4040001



- Ⓜ = Fan Motor
- Ⓜ1 = Fan Motor
- Ⓜ2 = Fan Motor
- Ⓜ3 = Rotor Motor
- ① = Yellow/Green
- ② = Black
- ③ = Blue
- ④ = Brown
- ⑤ = White (TW)
- ⑥ = Orange
- ⑦ = Grey
- ⑧ = Red
- ⑨ = Green
- ⑩ = Violet

Accessories

ETFV-94A
 FRE 6
 VRDE 1,5
 VRS 1,0
 VRTEC

Electrical accessories

FLF 200
 FLK 200
 BSV 200
 YG 200
 LDC 200